

C-SCC11

Glass Wall Mounted Touch
4-Zone RGBW DMX Controller

CAT. NO.: _____

TYPE: _____

PROJECT: _____

color•nix
by NOVA FLEX

SPECIFICATIONS

Capabilities	• Programmable with 4 playbacks
	• Pre-programmed looks include chasing and single-color
	• Dimming
Data Out Connection	RJ45 Jack
Max Number of Scenes	4
Number of Zones	4 independent, RGBW

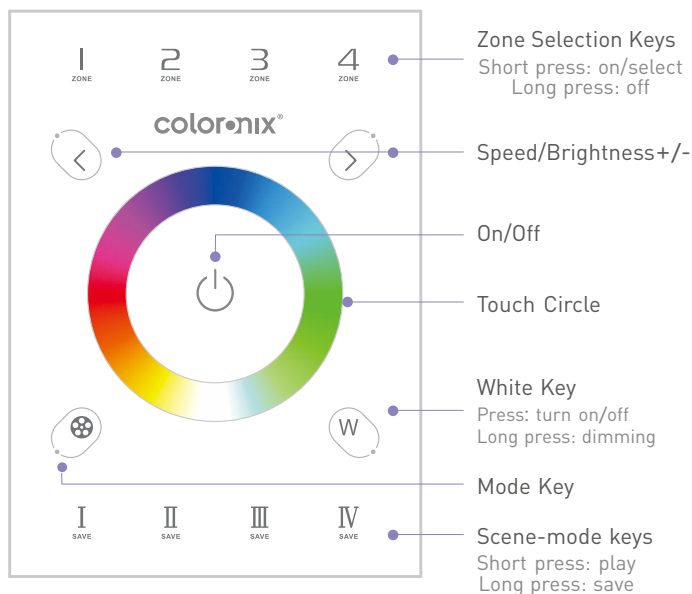
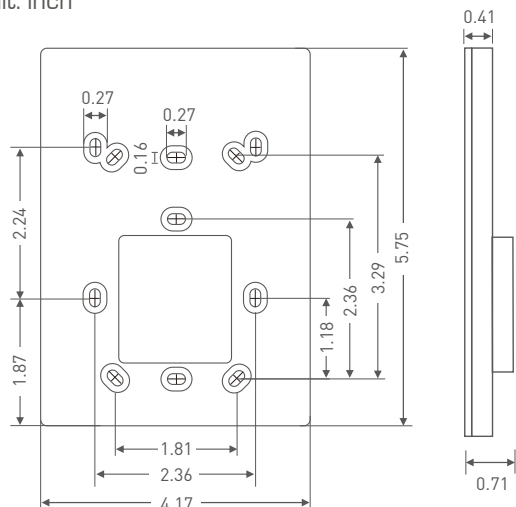
ELECTRICAL

Power Consumption	1W
Power Connection	Hardwire
Input Voltage	5Vdc, 0.5A-1A (with power adapter)
Output Signal	RF 2.4GHz, DMX512

PHYSICAL

Finish	White
Dimensions (WxLxD)	5.19" x 7.55" x 1.96"
Weight (N.W) (G.W)	230g 370g
Working Temp	- 30° C to 55° C

Unit: inch



MODES

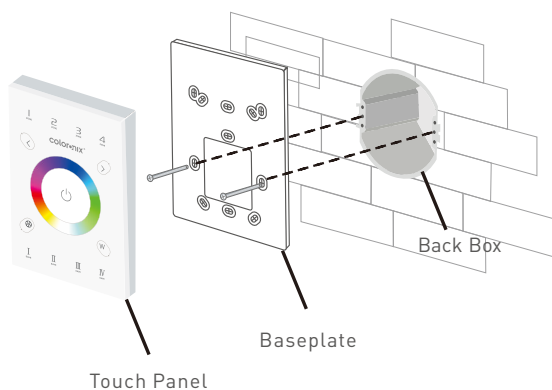
- | | | |
|-----------|----------------|---------------------|
| 1. Red | 5. Purple | 9. 7-colors jumping |
| 2. Green | 6. Cyan | 10. RGB Smooth |
| 3. Blue | 7. White | 11. 7-colors smooth |
| 4. Yellow | 8. RGB jumping | 12. Black |

C-SCC11

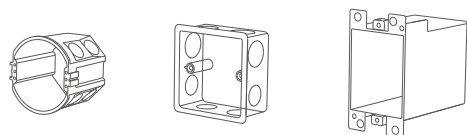
Glass Wall Mounted Touch
4-Zone RGBW DMX Controller

coloronix
by NOVA FLEX

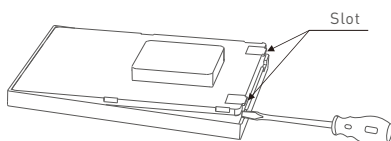
INSTALLATION



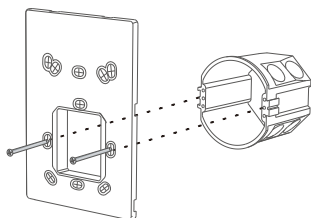
1. Install the back box into the wall. Typical boxes as below:



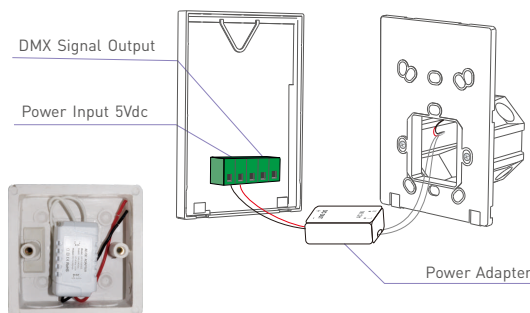
2. Use a straight screwdriver to pry the position shown:



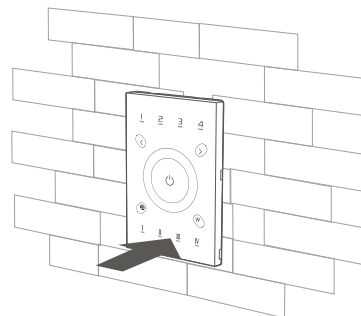
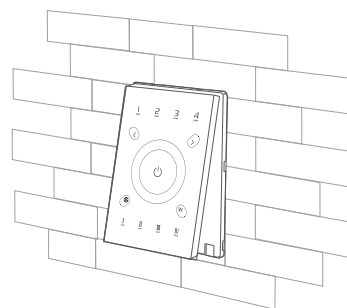
3. Screw the baseplate and the back box in the wall firmly.



4. Connect in a right way and put the power adapter into the back box.



5. Embed the upper touch panel into the baseplate and then tap the button to press into the slots.



TERMINALS

