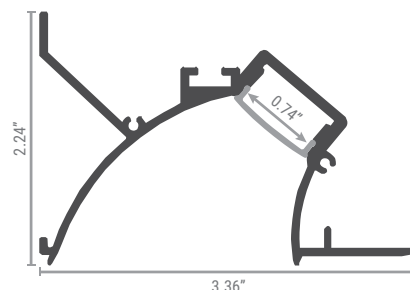
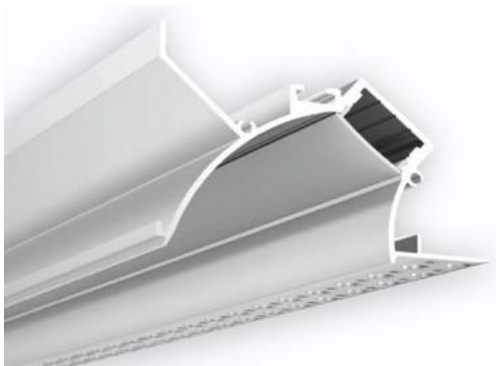


# MUD-IN 8570 CHANNEL SPECIAL ORDER\*

NOVA FLEX®



## Physical

Material	Anodized Aluminum
Length	2M**
Channel Option [Light Loss]	White [0%]
Lens Options [Light Transmission]	Clear [92%] Soft [78%] Solid [50%]

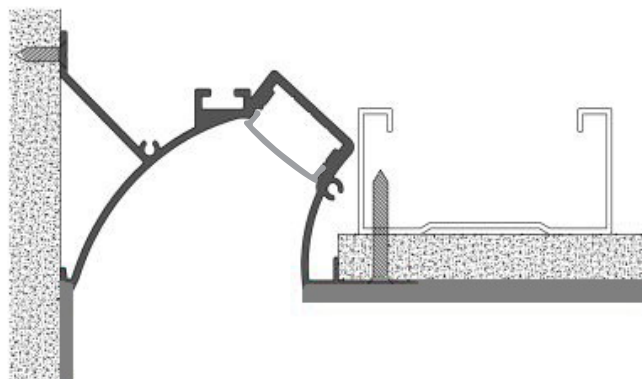
Lenses are suitable for outdoor use with respect to exposure to ultraviolet light and water exposure in accordance with UL 746C.

## Product Codes for Ordering

Channel	White: NF/SP-CH-8750-2M-WT
Lens	Clear: NF/SP-CH-8750-C/CLEAR-2M Soft: NF/SP-CH-8750-C/SOFT-2M Solid: NF/SP-CH-8750-C/SOLID-2M

## Mounting Option

### Mud-In



\*Special Order Product Notes:  
Lead-time 7-9 weeks  
MOQ 150 pcs (2M/pc)

FOR MORE  
INFORMATION  
CLICK HERE



PROJECT SUPPORT

INSTALL GUIDE

WHY NOVA FLEX