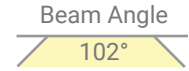
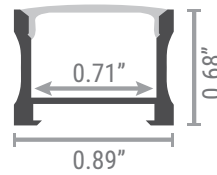
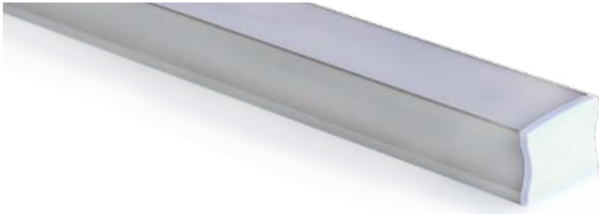


UNIVERSAL 2217 CHANNEL

SURFACE | SUSPENDED | MAGNETIC T-GRID | CONNECT

NOVA FLEX[®]



Physical

Material	Anodized Aluminum
Length	2M**
Channel Options [Light Loss]	Silver [10%] Black [20%] White [0%]
Lens Options [Light Transmission]	Clear [92%] Soft [78%] Black [25%]

Lenses are suitable for outdoor use with respect to exposure to ultraviolet light and water exposure in accordance with UL 746C.

Product Codes for Ordering

Channel	Silver: NF-CH-2217-2M Black: NF/SP-CH-2217-2M-BK* White: NF/SP-CH-2217-2M-WT*
Lens	Clear: NF-CH-2217-C/CLEAR-2M Soft: NF-CH-2217-C/SOFT-2M Black: NF/SP-CH-2217-C/BLACK-2M*

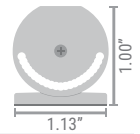
Mounting Options



Surface Mount with Clips
NF-CH-2217-CLIP
4 for every 2M of channel



Adjustable Clip
Angles: 0°/15°/30°/45°/60°/75°/90°
NF-CH-UNV-CLIP/ADJ



Suspension Kit
NF-CH-2217-WIRE
3 for every 2M of channel



Magnetic T-Grid
NF-CH-2217-MAGNET
4 for every 2M of channel



Channel-to-Channel Connector
NF-CH-2217-ST/CONN

Dotting & Compatibility

LEDs	DS64	DS128	DS160	DS240	H2128	PRO60	PRO120	PRO240	ADJ160	RGB60	RGBW60	DRGB48
IP65	1	1	0	0	0	2	1	1	2	1	1	1
IP68	2	1	1	NC	0	2	1	NC	1	2	2	2

NC = Not Compatible

0 - No Dotting

1 - Slight Dotting

2 - Blurred Dotting

3 - Clear Dotting

*Special Order Product Notes:
Lead-time 7-9 weeks
MOQ 150 pcs (2M/pc)

FOR MORE
INFORMATION
CLICK HERE

PROJECT SUPPORT

INSTALL GUIDE

WHY NOVA FLEX