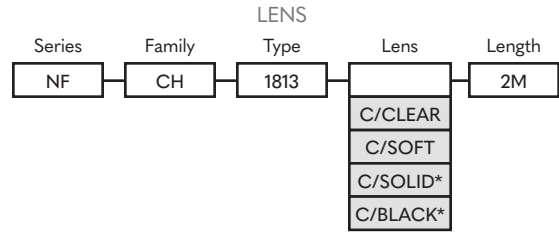
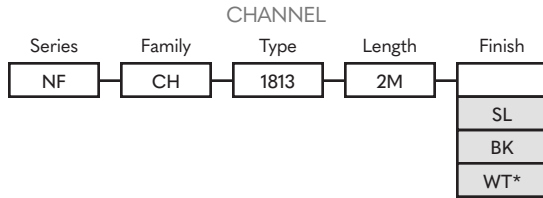


ORDER GUIDE SURFACE

1813



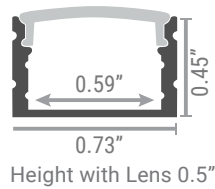
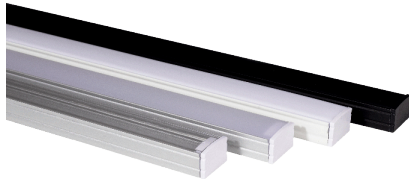
PART NUMBER BUILDER:



Notes:

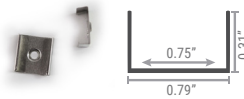
- *Lead-time 7-9 weeks
- Lenses are suitable for outdoor use with respect to exposure to ultraviolet light and water exposure in accordance with UL 746C. Every 2M of channel comes with 4 mounting clips and 2 end caps, one with a hole and one solid.

ENVIRONMENT AND DIMENSIONS



MOUNTING OPTIONS

Mount with Clips

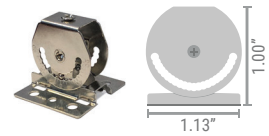


Part Number

NF-CH-1813-CLIP

Adjustable Clip

Angles: 0°/15°/30°/45°/60°/75°/90°



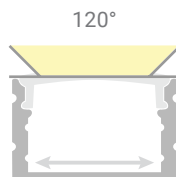
Part Number

NF-CH-UNV-CLIP/ADJ

Direct Mount



CUTOFF



Nova Flex LED, LLC. retains the right to modify the design of our products at any time as part of the company's continual product improvement program.

PROJECT

FIXTURE

PHASE

DATE

Rev: Feb.14.24/12:02

800.595.6302

novaflexled.com