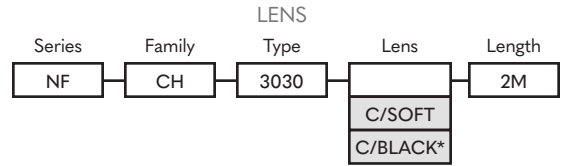
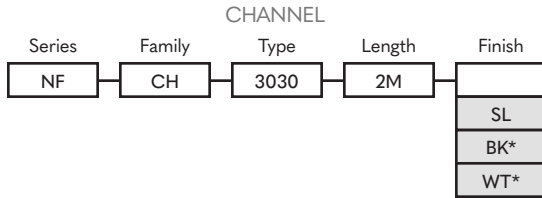


ORDER GUIDE SUSPENDED

3030



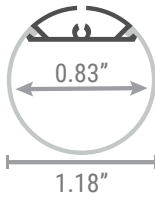
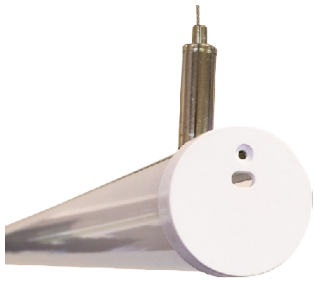
PART NUMBER BUILDER:



Notes:

- *Lead-time 7-9 weeks
- Lenses are suitable for outdoor use with respect to exposure to ultraviolet light and water exposure in accordance with UL 746C. Every 2M of channel comes with 4 mounting clips and 2 end caps, one with a hole and one solid.

ENVIRONMENT AND DIMENSIONS



MOUNTING OPTIONS

Suspension Kit

3 for every 2M on Channel



Part Number

NF-CH-3030-WIRE

CUTOFF



Nova Flex LED, LLC. retains the right to modify the design of our products at any time as part of the company's continual product improvement program.

PROJECT

FIXTURE

PHASE

DATE

Rev: Jan.31.24/16:01

800.595.6302

novaflexled.com