

Colorimetric Parameters

Chromaticity Coordinate: $x=0.4604$ $y=0.4163$ $u'=0.2603$ $v'=0.5296$

CCT=2737K(Duv=0.0021) Dominant WL:Ld =583.4nm Purity=63.2%

Peak WL:Lp=605.2nm FWHM=123.0nm

Render Index:Ra=80.3

R1 =78	R2 =89	R3 =97	R4 =77	R5 =77	R6 =86	R7 =83
R8 =56	R9 =3	R10=74	R11=75	R12=63	R13=80	R14=99 R15=71

Photometric & Radiometric Parameters

Flux=541.2 lm Eff.:48.93 lm/W Fe=1.646 W

Electrical parameters

V=24.00 V I=0.4609 A P=11.06 W PF=1.000 F=0.00 Hz

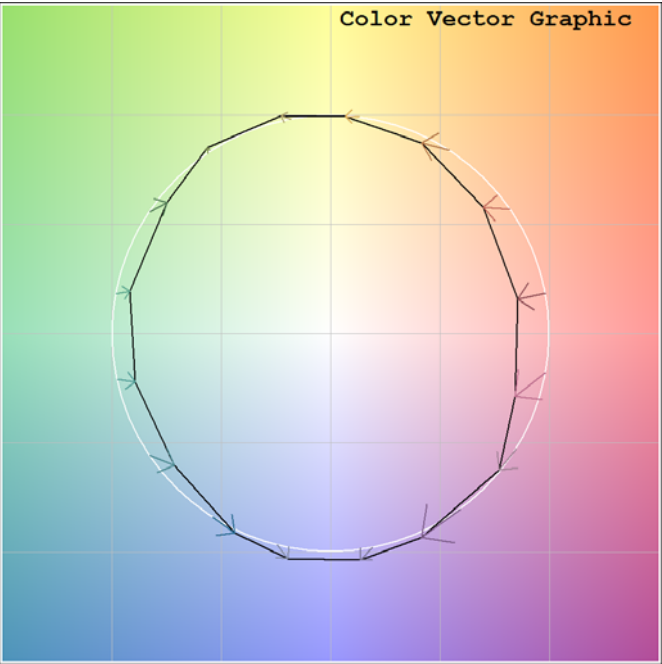
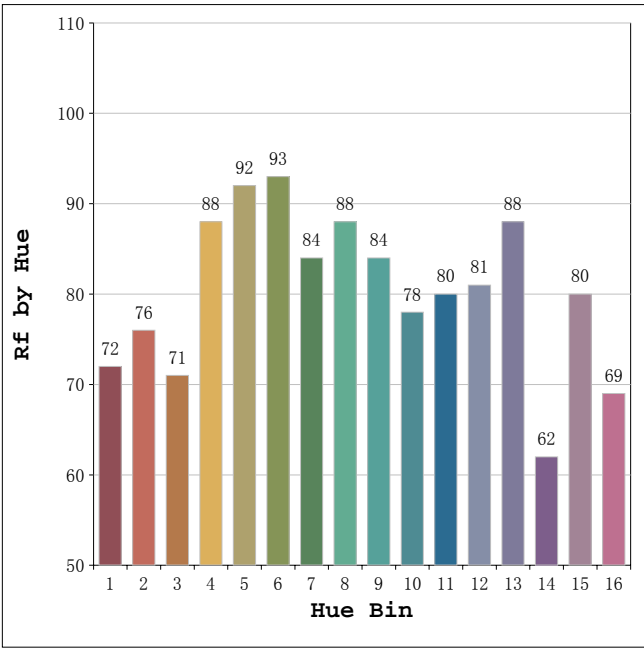
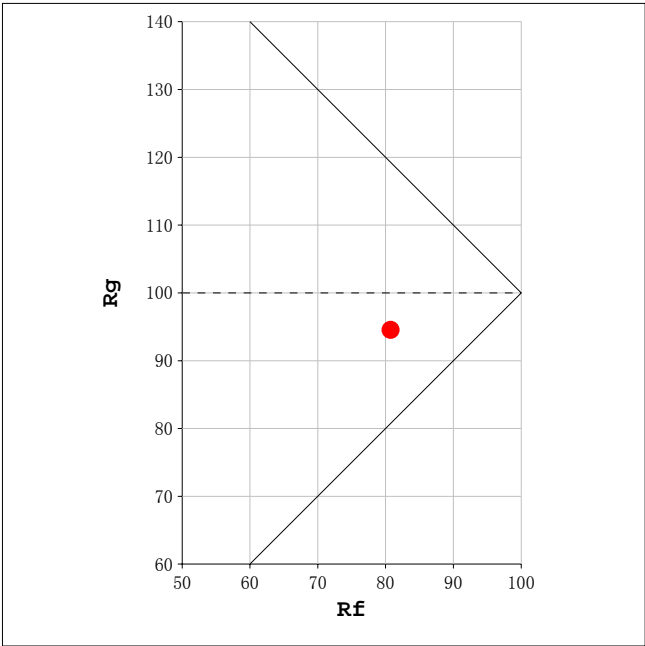
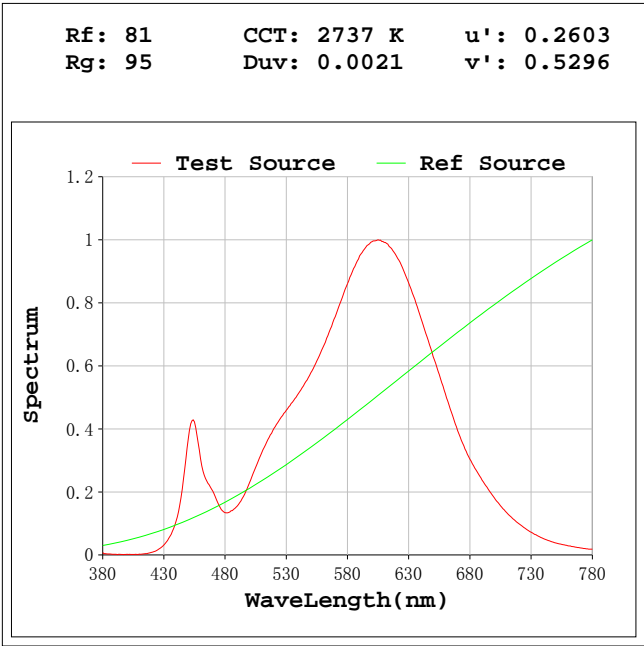
Status: Integral T = 304 ms Ip = 50701 (77%)

Test Mode: Fast Test; Sensitivity = High; Tecool: ON

Date:2019-03-05 11:41:04

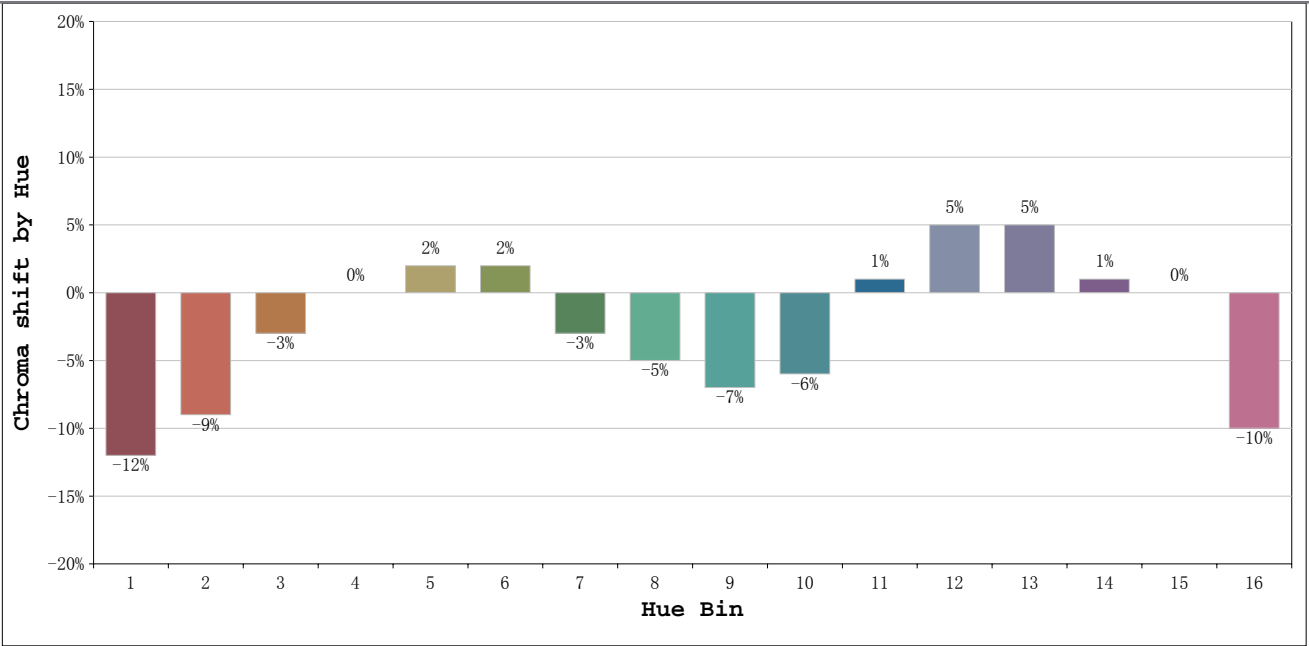
NEON ROUND WHITE

NF-NEON-W-ROUND-24V-2700K



NEON ROUND WHITE

NF-NEON-W-ROUND-24V-2700K



			Graphic shift(%)	
Hue Bin	Hue Angle	Rf	Chroma	Hue
1	0. 0° - 22. 5°	72	-12	0
2	22. 5° - 45. 0°	76	-9	7
3	45. 0° - 67. 5°	71	-3	12
4	67. 5° - 90. 0°	88	0	7
5	90. 0° - 112. 5°	92	2	4
6	112. 5° - 135. 0°	93	2	0
7	135. 0° - 157. 5°	84	-3	-7
8	157. 5° - 180. 0°	88	-5	-1
9	180. 0° - 202. 5°	84	-7	3
10	202. 5° - 225. 0°	78	-6	10
11	225. 0° - 247. 5°	80	1	13
12	247. 5° - 270. 0°	81	5	6
13	270. 0° - 292. 5°	88	5	-5
14	292. 5° - 315. 0°	62	1	-21
15	315. 0° - 337. 5°	80	0	-11
16	337. 5° - 360. 0°	69	-10	-12