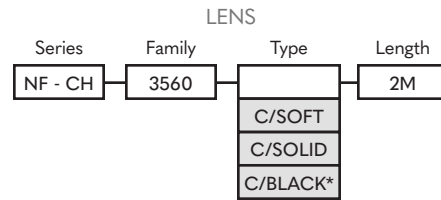
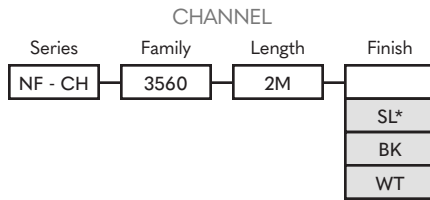


ORDER GUIDE UNIVERSAL

3560



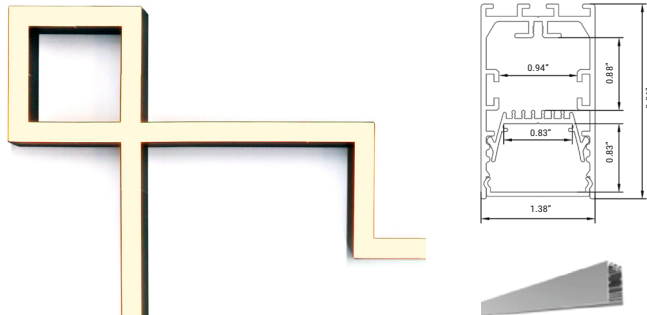
PART NUMBER BUILDER:



Notes:

- *Lead-time 7-10 weeks
- *MOQ 150 pcs (2M/pc)
- Lenses are suitable for outdoor use with respect to exposure to ultraviolet light and water exposure in accordance with UL 746C. Every 2M of channel comes with 4 mounting clips and 2 end caps, one with a hole and one solid.

ENVIRONMENT AND DIMENSIONS (INCHES UNLESS SHOWN)



MOUNTING OPTIONS

Recessed Mount Bracket



Part Number

NF-CH-3560-BRK

Surface Mount Clip

4 per 2M on wall, 6 per 2M on ceiling.



Part Number

NF-CH-3560-CLIP

Suspension Wire Kit

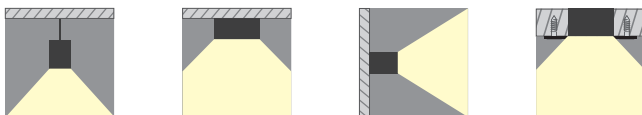
2 Per 2M



Part Number

NF-CH-3560-WIRE

CUTOFF



Nova Flex LED, LLC. retains the right to modify the design of our products at any time as part of the company's continual product improvement program.

PROJECT

FIXTURE

PHASE

DATE

Rev: Oct.02.23/11:10

800.595.6302

novaflexled.com



ACCESSORIES

Heat Sink Bar

4 per 2M on wall, 6 per 2M on ceiling.



Part Number

NF-CH-3560-HS-CLIP

End Caps



END CAPS

Series	Family	Finish
NF - CH	3560	EC*
		BK
		WT

END CAPS WITH HOLE

Series	Family	Finish
NF - CH	3560	ECH*
		BKH
		WTH

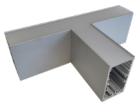
Roll of Soft Lens

Part Number

NF-CH-3560-C/SOFT-20M

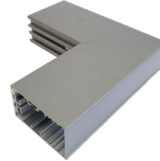
CONNECTOR ACCESSORY ADD-ONS

T - CONNECTOR



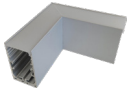
Series	Family	Type	Finish
NF - CH	3560	T	SL*
			BK*
			WT*

L - OUT - CONNECTOR



Series	Family	Type	Modifier	Finish
NF - CH	3560	L	OUT	SL*
				BK
				WT

L - CONNECTOR



Series	Family	Type	Finish
NF - CH	3560	L	SL*
			BK
			WT

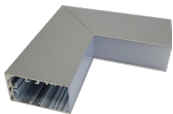
Splicing Connector Kit



Part Number

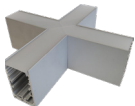
NF-CH-3560-ST/CONN

L - IN - CONNECTOR



Series	Family	Type	Finish
NF - CH	3560	IN	SL*
			BK
			WT

X - CONNECTOR



Series	Family	Type	Finish
NF - CH	3560	X	SL*
			BK*
			WT*

Nova Flex LED, LLC. retains the right to modify the design of our products at any time as part of the company's continual product improvement program.

PROJECT

FIXTURE

PHASE

DATE

Rev: Oct.02.23/11:10

800.595.6302

novaflexled.com