

Colorimetric Parameters

Chromaticity Coordinate: x=0.3879 y=0.3835/u'=0.2273 v'=0.5056

CCT=3854K(Duv=0.0010) Dominant WL:Ld =579.1nm Purity=31.5%

Peak WL:Lp=593.1nm FWHM=144.6nm

Render Index: Ra=82.6

R1 =81	R2 =89	R3 =95	R4 =81	R5 =81	R6 =85	R7 =86
R8 =63	R9 =6	R10=74	R11=80	R12=61	R13=83	R14=97
						R15=74

Photometric & Radiometric Parameters

Flux=410.7 lm Eff.:36.81 lm/W Fe=1.236 W Scotopic:670.52 S/P:1.6326

Electrical parameters

V=24.00 V I=0.4649 A P=11.16 W PF=1.000 F=0.00 Hz

Status: Integral T = 100 ms Ip = 10219 (16%)

Test Mode: Fast Test; Sensitivity = High; Tecool: ON

Model:NF-NEON-WT-MINI2.0-24V-4000K-CRI80-1M

Temperature:25.3Deg

Date:2020-04-23 11:50:22

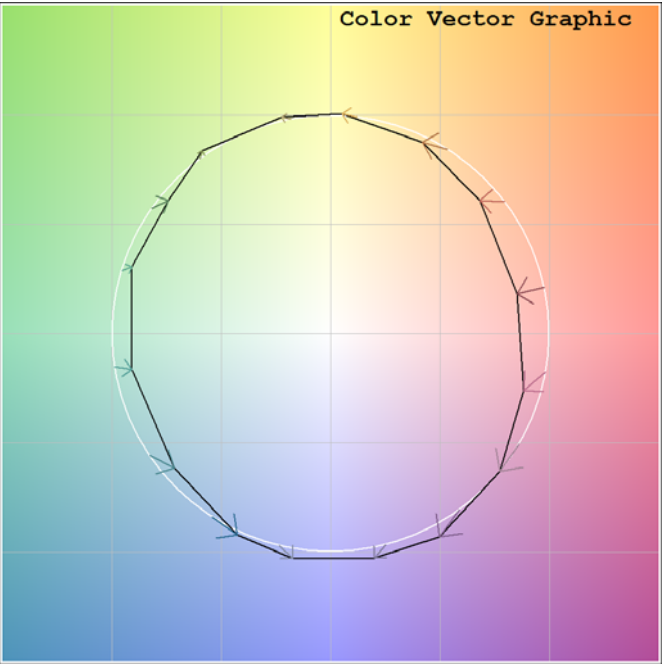
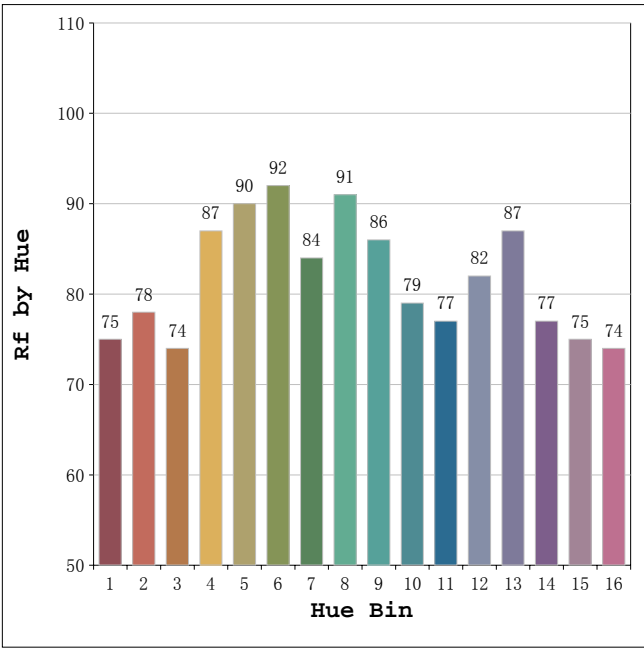
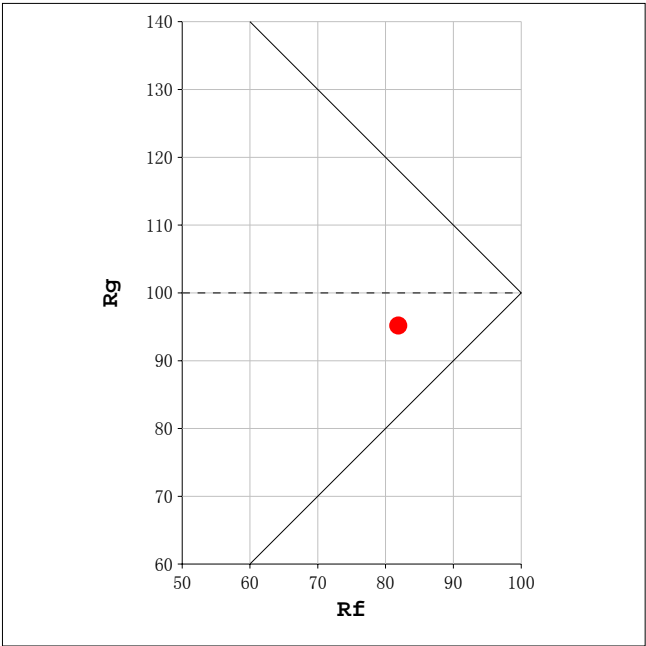
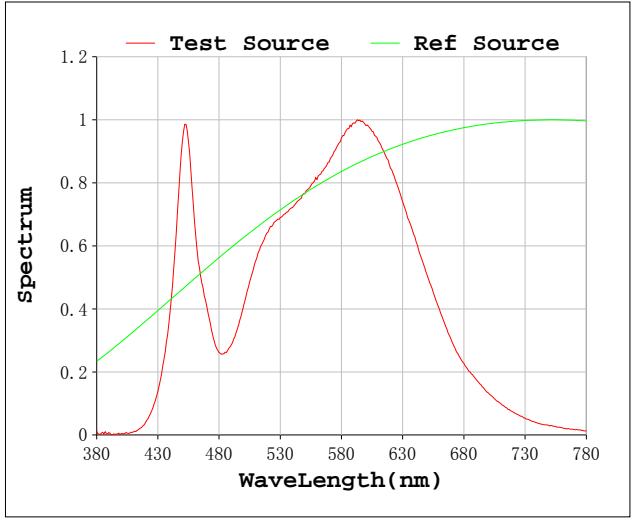
Humidity:63.0%

Mini Neon 2.0

NF-NEON-WT-MINI2.0-24V

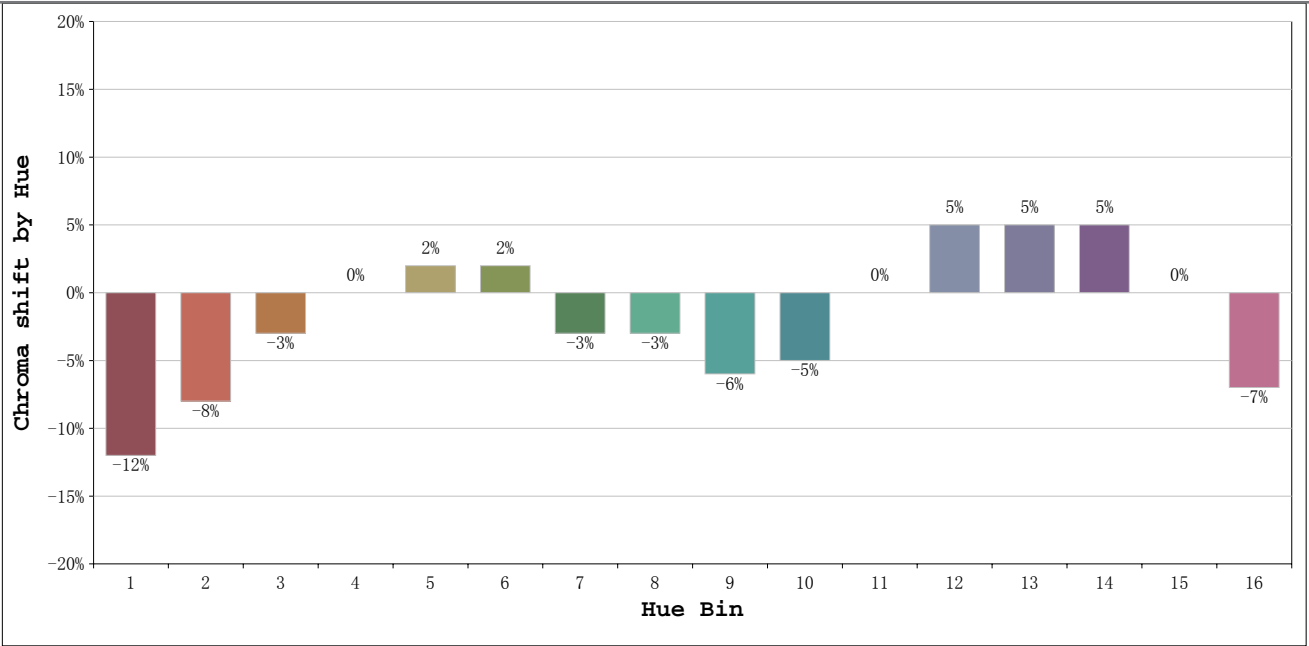


Rf: 82 CCT: 3854 K u': 0.2273
Rg: 95 Duv: 0.0010 v': 0.5056



Mini Neon 2.0

NF-NEON-WT-MINI2.0-24V



			Graphic shift(%)	
Hue Bin	Hue Angle	Rf	Chroma	Hue
1	0.0° - 22.5°	75	-12	0
2	22.5° - 45.0°	78	-8	7
3	45.0° - 67.5°	74	-3	12
4	67.5° - 90.0°	87	0	7
5	90.0° - 112.5°	90	2	4
6	112.5° - 135.0°	92	2	-2
7	135.0° - 157.5°	84	-3	-6
8	157.5° - 180.0°	91	-3	-2
9	180.0° - 202.5°	86	-6	3
10	202.5° - 225.0°	79	-5	11
11	225.0° - 247.5°	77	0	14
12	247.5° - 270.0°	82	5	7
13	270.0° - 292.5°	87	5	-5
14	292.5° - 315.0°	77	5	-14
15	315.0° - 337.5°	75	0	-14
16	337.5° - 360.0°	74	-7	-9