

### Colorimetric Parameters

Chromaticity Coordinate:  $x=0.4589$   $y=0.4050$   $u'=0.2644$   $v'=0.5251$

CCT=2669K (Duv=-0.0020) Dominant WL:Ld =585.0nm Purity=59.3%

Peak WL:Lp=640.0nm FWHM=150.3nm

Render Index: Ra=97.8

R1 =98	R2 =98	R3 =99	R4 =98	R5 =98	R6 =96	R7 =98	
R8 =98	R9 =98	R10=97	R11=95	R12=90	R13=97	R14=99	R15=99

### Photometric & Radiometric Parameters

Flux=278.5 lm Eff.:24.98 lm/W Fe=1.135 W Scotopic:374.02 S/P:1.3429

### Electrical parameters

V=24.00 V I=0.4647 A P=11.15 W PF=1.000 F=0.00 Hz

Status: Integral T = 100 ms Ip = 8405 (13%)

Test Mode: Fast Test; Sensitivity = High; Tecool: ON

Model:NFSP-NEON-WT-MINI2.0-24V-2700K-CRI90-1M

Temperature:25.3Deg

Date:2020-04-23 13:21:01

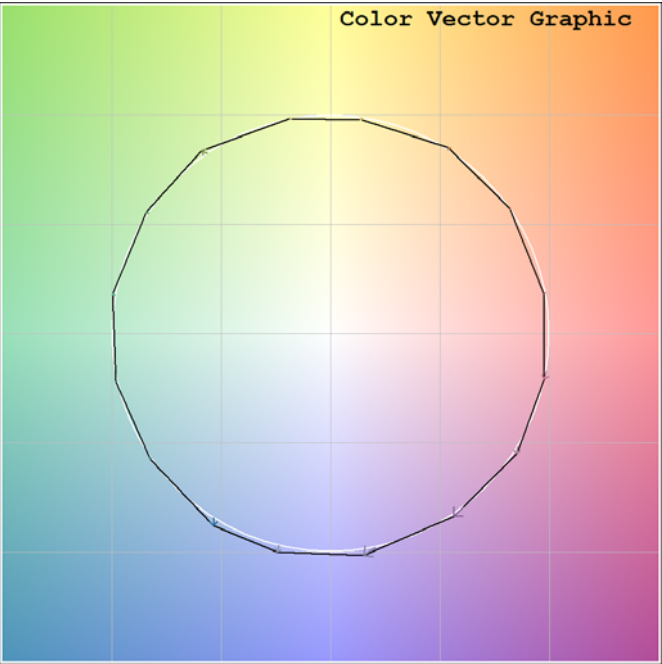
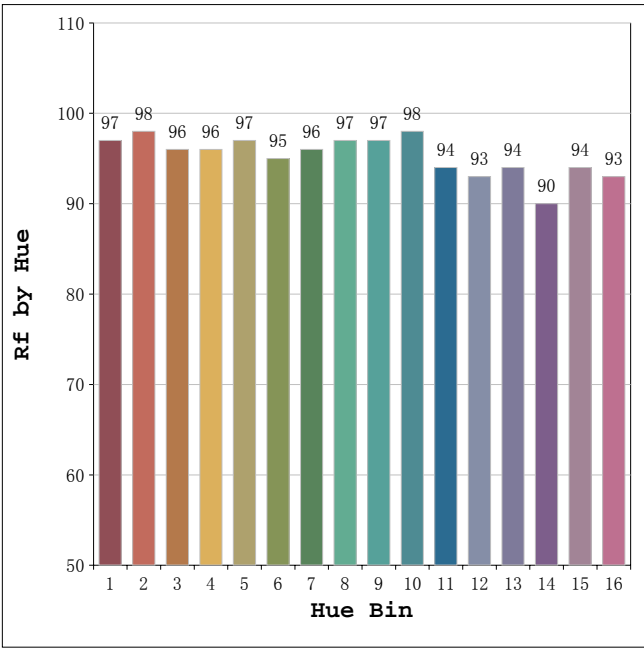
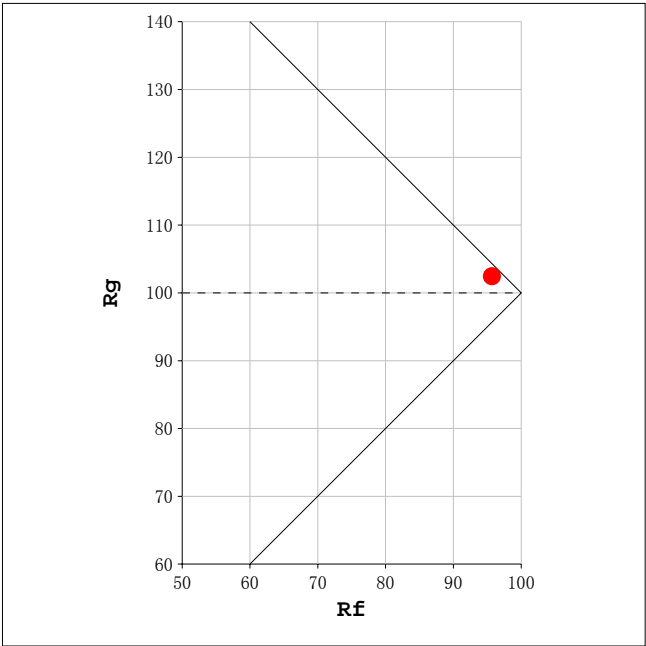
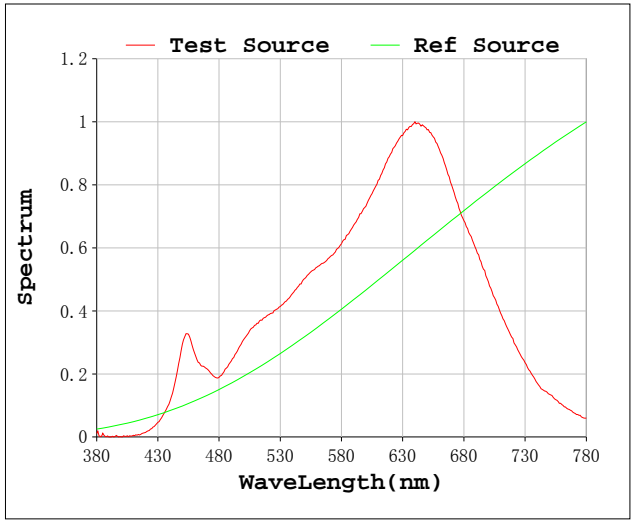
Humidity:63.0%

# Mini Neon 2.0

NF-NEON-WT-MINI2.0-24V

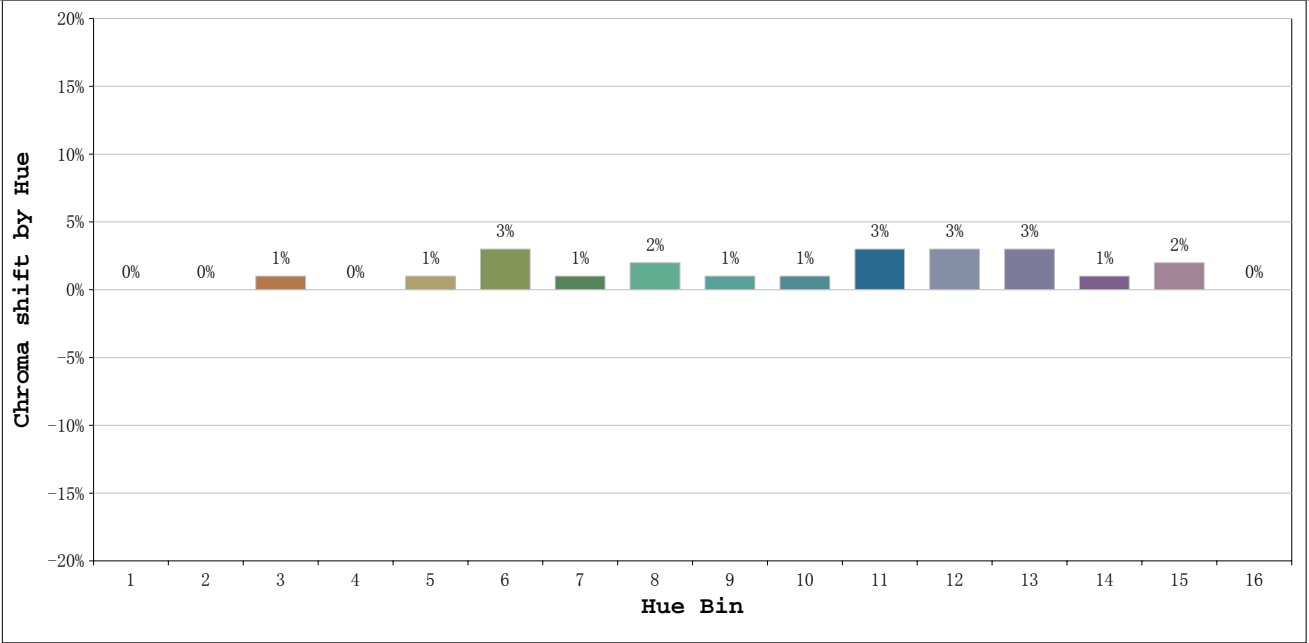


Rf: 96      CCT: 2669 K      u': 0.2644  
Rg: 102      Duv: -0.0020      v': 0.5251



# Mini Neon 2.0

NF-NEON-WT-MINI2.0-24V



			Graphic shift(%)	
Hue Bin	Hue Angle	Rf	Chroma	Hue
1	0. 0° – 22. 5°	97	0	0
2	22. 5° – 45. 0°	98	0	0
3	45. 0° – 67. 5°	96	1	1
4	67. 5° – 90. 0°	96	0	0
5	90. 0° – 112. 5°	97	1	1
6	112. 5° – 135. 0°	95	3	2
7	135. 0° – 157. 5°	96	1	0
8	157. 5° – 180. 0°	97	2	0
9	180. 0° – 202. 5°	97	1	1
10	202. 5° – 225. 0°	98	1	1
11	225. 0° – 247. 5°	94	3	2
12	247. 5° – 270. 0°	93	3	0
13	270. 0° – 292. 5°	94	3	-5
14	292. 5° – 315. 0°	90	1	-5
15	315. 0° – 337. 5°	94	2	-2
16	337. 5° – 360. 0°	93	0	-3